

More space, more comfort, more year-round livability.

It's almost like adding another room to your home -- at a fraction of the cost. With PGT® Eze-Breeze® Sliding Panels, you can really start to enjoy your outdoor space, often the least-used areas of your home: your porch, your outdoor deck, pool or gazebo. Whether you're replacing an existing screen enclosure or adding it for the first time, you can turn those neglected spaces into year-round gathering places.

EASILY INSTALLED, EASILY USED.



Lighter and more affordable than glass, the tough vinyl glazing returns to original shape within minutes if distorted.

Each Sliding Panel unit is custom-made to exacting standards at our factory and comes with a warranty against manufacturing and material defects. Like the screen enclosure itself, vinyl vents are not hurricane proof. Homeowners should remove the vents if winds exceed 65 mph.

Eze-Breeze Sliding Panels are uniquely designed and custom-sized to fit existing openings without expensive re-framing. So it's easy to enclose your outdoor spaces. Versatile, rugged and attractive, they're also a snap to operate. Open, they let in the breeze while screening out insects and debris. Closed, they provide protection from rain, snow, wind and summer sun.

Lightweight, but heavy-duty. Eze-Breeze Sliding Panels are constructed of durable aluminum frames with tough powder coat. The frames hold mesh screens and lightweight, vinyl-glazed panels in place. The strong, 10-mil vinyl glaze we use provides panoramic views, while keeping wind and bad weather out. If accidentally distorted, it will return to its original shape within minutes. If cut or damaged, it can be replaced easily and inexpensively by your PGT Eze-Breeze distributor. Clean with mild dishwashing detergent and a clear water rinse. For best results, we recommend a final cleaning with PGT Vinyl Cleaner and Preservative, available through your PGT distributor.

FRAME COLORS



White Bronze Almond

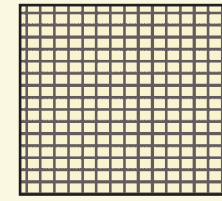
VINYL COLORS



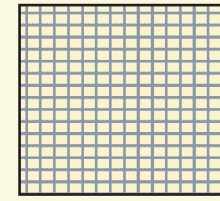
Clear Bronze Gray

Almond is not available in Garage Doors, Side Sliders or Lift-Outs.

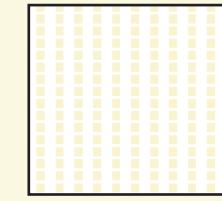
SCREEN TYPES



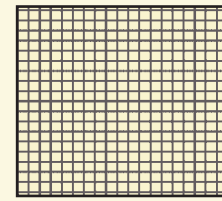
1814 Charcoal



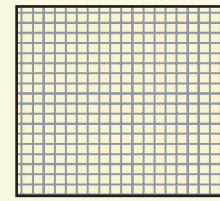
1814 Gray



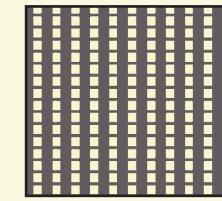
Sunscreen White



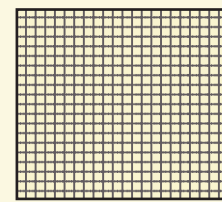
1816 Charcoal



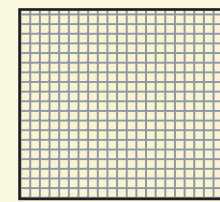
1816 Gray



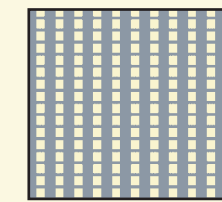
Sunscreen Charcoal



2020 Charcoal



2020 Gray



Sunscreen Gray

To learn more, go to ezebreezestore.com

Products that are Visibly Better.®

Eze-Breeze has no equal. It's a unique, custom-designed product that offers no-hassle installation, on-time delivery and the backing of a solid company. For over 25 years, PGT Industries has been one of the largest US manufacturers of residential impact-resistant windows and doors. The company operates manufacturing, glass tempering and laminating, and delivery fleet facilities in Venice, Florida, and a production facility in Lexington, North Carolina. Sold through a network of over 1,300 independent distributors, the company's total line of custom windows and doors is now available throughout the eastern United States, the Gulf Coast and in a growing international market, which includes the Caribbean, South America and Australia. PGT's product line includes PGT® Aluminum and Vinyl Windows and Doors, WinGuard® Impact-Resistant Windows and Doors, Multi-Story Series 800 Windows and Doors, and Eze-Breeze® Sliding Panels.



Let cool breezes in. Keep bad weather out.



Beautiful and versatile - the choice is yours.

PGT® Eze-Breeze® gives you two ways to enclose your outdoor spaces. Vertical Four-Tracks open up to 75% of your window area for ventilation, while Side Sliders open half way.

VERTICAL FOUR-TRACK PANELS



These panels are custom-made to fit any space, complementing any style home with clean lines and pleasing proportions. The lightweight, vinyl-glazed panels can be raised or lowered effortlessly to open up 75% of the window area to the breeze, or can be easily removed and stored, leaving screens in place.

Panels tilt in for easy cleaning and can be ordered in clear, bronze and gray tints to reduce the sun's glare and solar heat gain.



Easy to remove for full ventilation.

"Our patio enclosure with Eze-Breeze Sliding Panels gives us more living area and more opportunity to enjoy the climate here. It provides shade, ventilation and protection year 'round."

-- Chuck & Sharon Urbaneck, Venice, FL

HORIZONTAL SIDE SLIDER PANELS

For an attractive, spacious and wide-open look, nothing beats the Side Slider.

Available in two- and four-track versions, these full-length panels move back and forth at the touch of a finger on corrosion-resistant nylon rollers. Like Vertical Four-Tracks, they can be lifted out easily for storage or cleaning, and ordered in clear, bronze and gray tints.



Sliding panels latch securely in place.

"We love our room with Eze-Breeze Sliding Panels. We can enjoy the outdoors without the bugs in summer. And with the panels closed, we can sit out in comfort even when the weather turns colder."

-- Barbara & Dennis Duke, Fort Wayne, IN



Add even more space to your home.

EZE-BREEZE GARAGE DOOR SCREENS

Your garage could be the ideal place for you to exercise, work on hobbies and home improvement projects, or let the kids play on a rainy afternoon. But with the door closed, it's hot and stuffy. With the door open, you're inviting in debris, insects and the neighbor's cat.

PGT Eze-Breeze Garage Door Screens are an affordable way to get more use out of your garage. Their rugged screens slide across the garage door opening at the touch of a finger, creating a well-ventilated, screened-in area where you can work or play in comfort. Go ahead and leave the lights on in the evening -- the screens will keep the insects out. And when you want to put the car in, Eze-Breeze Garage Door Screens glide smoothly out of the way.

"Now we can use our garage to work on hobbies or home improvement projects during the day and in the evening. The screens let in the breeze, but keep the bugs out."

-- Jim & Darlene Lambert, LaBelle, FL

FOR VIRTUALLY ANY SIZE GARAGE DOOR OPENING



Eze-Breeze Garage Door Screens are custom-made of sturdy, high-quality aluminum frames with durable powder coat white or bronze paint. Standard screens are charcoal-colored 18/14 fiberglass mesh, with other meshes and colors available.



FOR YEAR-ROUND COMFORT

Interested in keeping your new-found space more comfortable year-round? Let in light and fresh air while keeping bad weather out with panels glazed in clear or tinted vinyl. If the screens or vinyl are cut or damaged, they're easily replaced by your PGT Eze-Breeze distributor. And the kickplate at the base provides extra strength, keeps rain from splashing in and helps prevent damage to panels.

Screens open and close at the touch of a finger. The unique "come-along" feature pulls or pushes each screen panel into the proper position. Panels glide easily on large neoprene rubber wheels, then latch securely in place.



The rugged, low-profile threshold installs easily at the garage door opening. Drive your car right across it without worrying about damaging the track - or your tires.

