



eze-breeze® Product Guide Table of Contents

Eze-Breeze Product Overview	1 - 4
Vertical Four Track - Series 4V60	
Outside Mount Features	5
Outside Mount Guidelines	6
Outside Mount Configuration	7
Inside Mount Features	8
Inside Mount Guidelines	9
Inside Mount Configuration	10
Minimum and Maximum Guidelines	11
Horizontal Side Slider - Series SS10 & Horizontal Side Slider Garage Door Screen - Series SS30	
SS10 - Outside Mount Features	12
SS10 - Outside Mount Guidelines	13
SS10 - Outside Mount Configuration	14
SS10 - Inside Mount Features	15
SS10 - Inside Mount Guidelines	16
SS10 - Inside Mount Configuration	17
SS30 - Outside Mount Features	18
SS30 - Outside Mount Guidelines	19
SS30 - Outside Mount Configuration	20
SS30 - Inside Mount Features	21
SS30 - Inside Mount Guidelines	22
SS30 - Inside Mount Configuration	23
SS10 & SS30 Side Slider 2-Track & 4-Track Configurations	24 - 27
Removable Vent Fixed Lite	
Outside Mount Features	28
Outside Mount Guidelines	29
Heavy Duty Lip Frame Fixed Lite	
Features	30
Guidelines	31
Standard Lip Frame Fixed Lite	
Features	32
Guidelines	33
Vertical Two Track	
Features	34
Guidelines	35



Eze-Breeze Product Overview

Product names and series numbers:

Vertical Four Track	4V60
Horizontal Side Slider	SS10 (sill with flange)
Side Slider Garage Door Screen	SS30 (sill without flange)
Removable Vent Fixed Lite - single, twin, and triple	RV20
Standard Lip Frame Fixed Lite	LF20
Standard Lip Frame Shape	LS20
Heavy Duty Lip Frame	HLF20
Heavy Duty Lip Frame Shape	HLS20
Vertical Two Track Screen Door Insert	2V60

Size selection: *(varies by product)*

Opening size with 1/8" cutback (deduction)	size of the actual finished opening; product will be manufactured 1/8" smaller in width and height so it fits into the opening
Opening size with 1/4" cutback (deduction)	size of the actual finished opening; product will be manufactured 1/4" smaller in width and height so it fits into the opening
Opening size with 3/8" cutback (deduction)	size of the actual finished opening; product will be manufactured 3/8" smaller in width and height so it fits into the opening
Actual window size with no cutback (deductions)	Actual size of the unit not including the installation flange; product will be manufactured to this size without deductions.

Installation frame types:

Outside Mount (OSM)	Mounted from the outside; installation flange is on the exterior side of the opening
Inside Mount (ISM)	Mounted from the inside; installation flange is on the interior side of the opening

Configurations:

- OSM Vertical Four-Track - single, twin, and triple
- ISM Vertical Four-Track - single
- SS10 / SS30 2-track and 4-track - stacked, staggered, condo, pyramid, and pocket
- Removable Vent Fixed Lite - single, twin, and triple

Frame colors:

White, bronze, beige, or pebble khaki (driftwood)

Vinyl colors (10-mil):

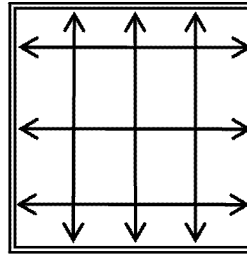
Clear, bronze, dark gray, or smoke gray

Screen mesh :

- 1814 charcoal and gray
- 1816 charcoal and gray
- BetterVue® 2020 Screen
- SunScreen® charcoal, gray, and white

Measuring:

We recommend that at least three (3) measurements be taken on the width and height of the opening. When placing your order give the smallest recorded measurement for both width and height.

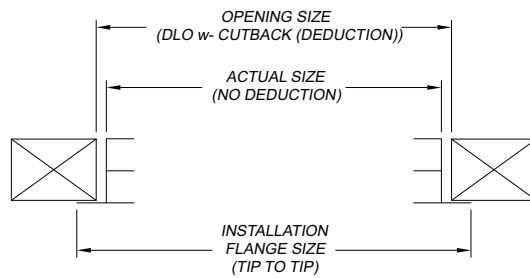


Ordering:

"Opening Size" measurements are preferred
 All sizes must be given width x height in inches - see product specifics for standard cutbacks (deductions) or order by actual unit size

Size selection: *(varies by product)*

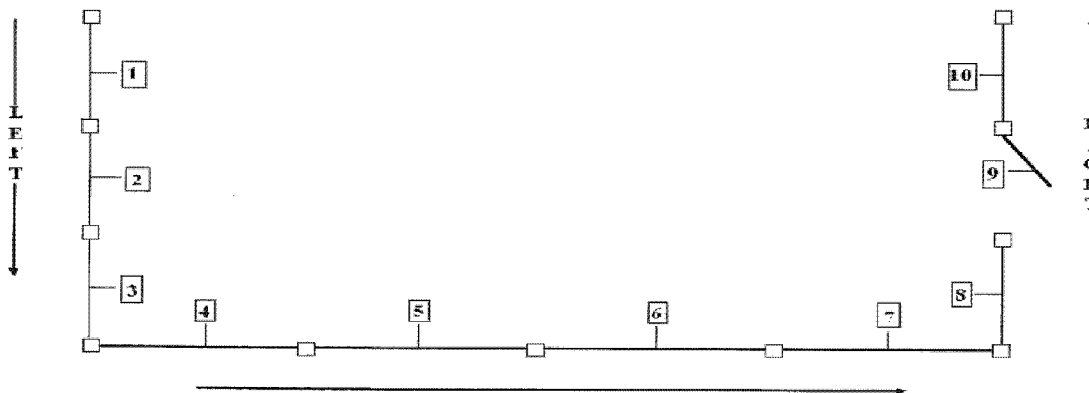
- Opening size with 1/4" deduction in width & height
- Opening size with 1/8" deduction in width & height
- Opening size with 3/8" deduction in width & height
- Actual window size with no deduction



Ordering Sequence:

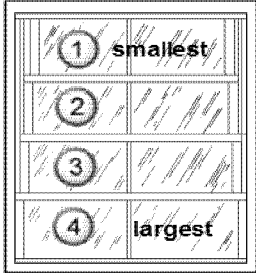
Upon request, PGT will number the units in the same order they are given thus avoiding confusion during installation. When measuring, start at one end and work your way around the room, numbering each opening in sequence and give your Customer Service Representative the unit sizes in the same order they were measured.

"View of Room Layout for Ordering Sequence"



Identifying 4V60 vents

Vents are numbered 1- 4 starting at the top.



- Vent # 1 - smallest in width and located in the outermost track
- Vent # 2 - located in 2nd track from the exterior
- Vent # 3 - located in 3rd track from exterior
- Vent # 4 - largest in width and located in the innermost track

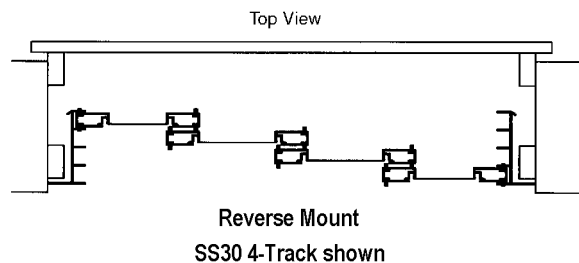
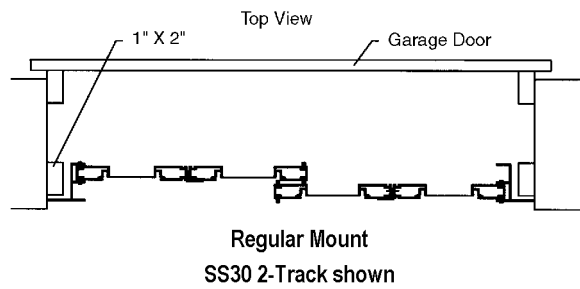
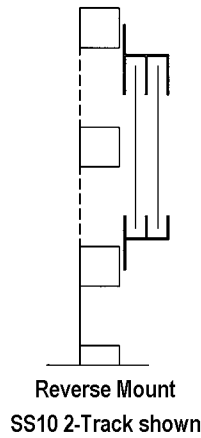
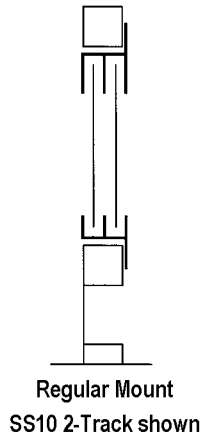
Each vent is 3/4" larger in width than the previous vent.
Vent heights are the same unless the original unit was ordered with an unequal vent.

Inside Mount 2 -Track and 4-Track Side Sliders

These are installed in a regular or reverse fashion.

Regular – Weepholes are located on the opposite side of the flange.

Reverse – Weepholes are located on the same side as the flange.



Identifying SS10 and SS30 vents and tracks:

Vents are numbered left to right from the inside-looking-out. In the case of a Condo unit, count the vinyl glazed vents first and then the screen vents. Tracks are lettered A - D from the inside-looking-out.

4-Track 8-Vent Pyramid Condo

Outside

Track D	Vent 5 (screen)	Vent 6 (screen)	Vent 7 (screen)	Vent 8 (screen)	Track D
Track C	Vent 1			Vent 4	Track C
Track B		Vent 2	Vent 3		Track B
Track A					Track A

Inside

2-Track 4-Vent Staggered

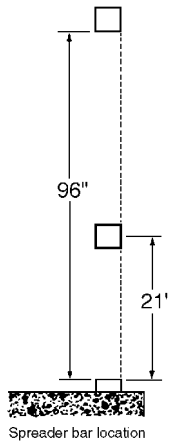
Outside

Track B	Vent 1		Vent 3		Track B
Track A		Vent 2		Vent 4	Track A

Inside

Identifying Side Slider spreader bar location:

Measure from the bottom of the opening to the center of the spreader bar



Standard Lip Frame and Trapezoid:

These are an inexpensive method to enclose a small opening, or where operable units are not required. Due to their design, this product is not recommended for use in areas that are highly exposed to rain.

Trapezoid shapes:

Trapezoids are available in a left or right shape orientation. To determine the shape orientation, view the trapezoid from the direction they are being mounted/installed; shapes that slope down to the left are a Left shape orientation and shapes that slope down to the right are a Right shape orientation. The measurements needed when placing your order are: width/base, overall height, and leg height. The slope dimension, or angle degree is not needed or required.

Vertical 2 Track Door Inserts:

These easily convert a standard screen door into a vinyl/screen door.

Ordering replacement parts:

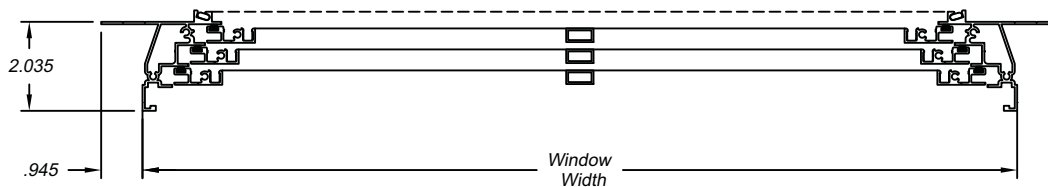
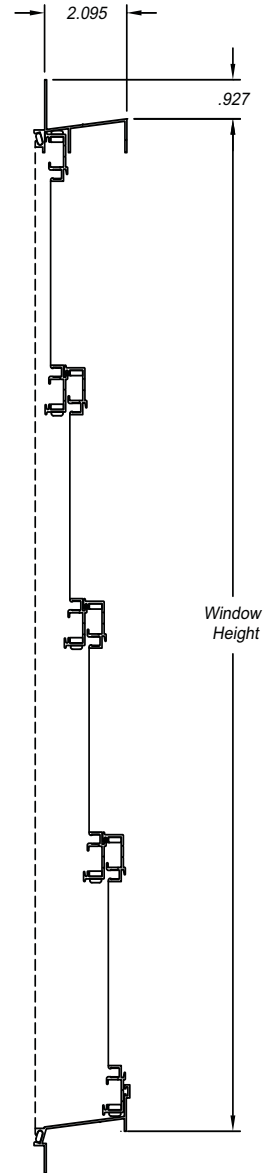
It is best to order replacement parts by providing the same information that would be needed for a complete unit. Opening size, size selection (cutback), installation frame type, frame color, vinyl color, spreader bar quantity, equal, or unequal vent, etc... When ordering replacement vents, identify the needed vent using the information above.

STANDARD FEATURES

- Outside mount frame
- Aluminum extruded main frame
- White frame color
- Frame depth 2"
- 1" front installation flange
- Glazed with 10-mil clear vinyl
- Equal interlocking vents
- Tilt in, removable vents
- Spreader bar(s)
- 1814 charcoal screen rolled-in frame
- Sizing
 - Opening size with 1/8" deduction in width & height

OPTIONAL FEATURES

- Bronze, beige, or pebble khaki (driftwood) frame color
- Bronze, dark gray, or smoke gray 10-mil vinyl color
- BetterVue® 2020, SunScreen®, and 1816 screen mesh
- 8 vent stereo (twin), 12 vent stereo (triple)
- Unequal vents
- Mixed vinyl color in vents
- 2, 3, and 4 vent configurations
- Sizing
 - Opening size with 1/4" deduction in width & height
 - Actual unit size with no deductions





Vertical Four-Track

Series 4V60

Outside Mount Guidelines

Information necessary for a complete and correct quote/order:

	Example:	Example:	Example:
1. Product / series number	4V60	4V60	4V60
2. Installation frame type	OSM	OSM	OSM
3. Unit configuration	Single	Twin	Triple
4. Size selection	Opening with 1/4" cutback	Opening with 1/8" cutback	Actual (No deductions)
5. Size	49 1/2" x 59"	80" x 64"	140" x 84"
6. Vent quantity	4	3	4
7. Vent configuration	Equal	Equal	Unequal (Bottom vent 18 1/4" height)
8. Spreader bar quantity	2	1	1
9. Frame color	White	Beige	Bronze
10. Vent glazing	Clear	Smoke gray	Bronze
11. Screen configuration	Rolled- in frame	Rolled - in frame	No screen
12. All other desired options must be included at the time of order			

Note: Options not listed cannot be incorporated into your quote or order

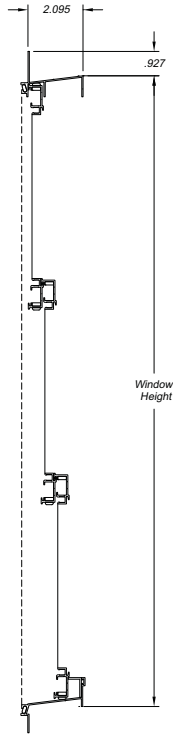
Additional order and product information:

- Opening measurement is preferred:** Our standard cutback (deduction) is 1/8" and will be taken in both width and height. You may choose one of our other options: 1/4" cutback or actual unit size (not including installation flange).
- To ensure exceptional product performance and functionality, spreader bars are required on actual unit widths that exceed 30" wide.

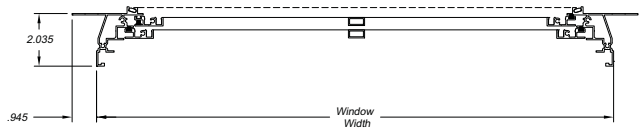
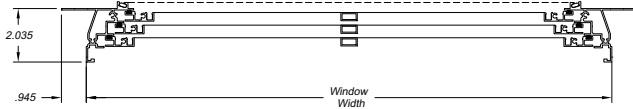
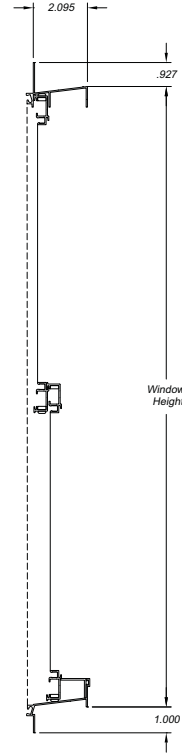
3. Sizes and configurations:	Minimum Actual Size :	Maximum Actual Size :
Single Unit		
4 vent	11 7/8" x 23 1/16"	72" x 113"
3 vent	11 7/8" x 17 13/16"	72" x 89 3/4"
2 vent	11 7/8" x 12 1/2"	72" x 60 3/8"
Twin Unit		
4 vent	42" x 23 1/16"	108" x 96"
3 vent	42" x 17 13/16"	108" x 89 3/4"
2 vent	42" x 12 1/2"	108" x 60 3/8"
Triple Unit		
4 vent	72" x 23 1/16"	144" x 96"
3 vent	72" x 17 13/16"	144" x 89 3/4"
2 vent	72" x 12 1/2"	144" x 60 3/8"

See Product Minimum and Maximum Guidelines on page 11

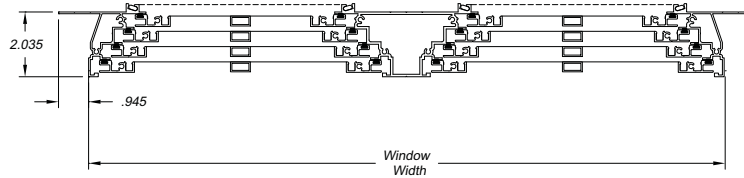
Vertical Four Track-3 vents



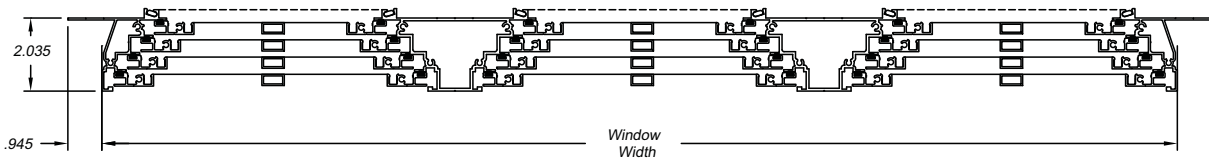
Vertical Four Track-2 vents



Vertical Four Track Twin-4 vents



Vertical Four Track Triple- 4 vents



Vertical Four-Track

Series 4V60

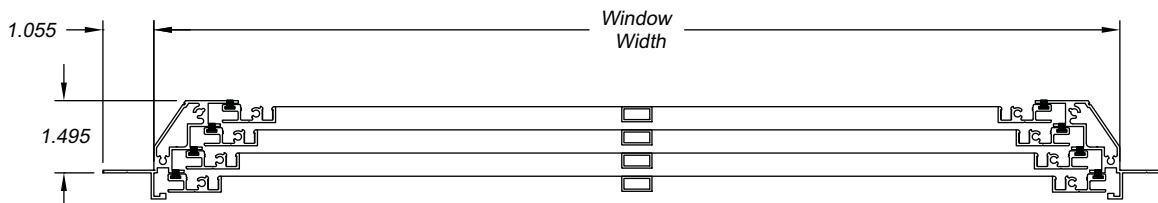
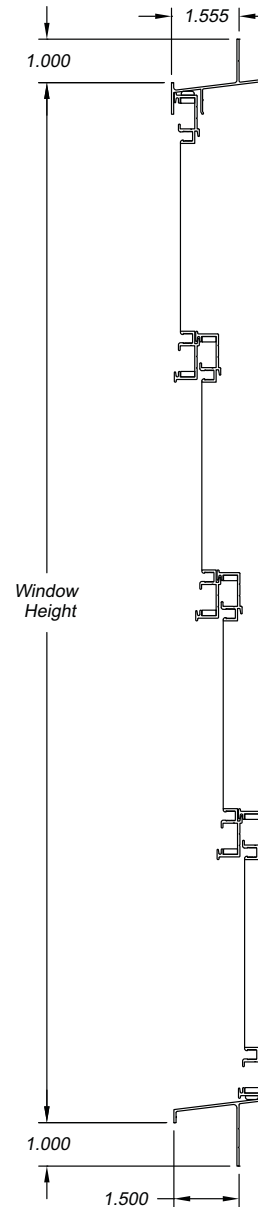
Inside Mount Features

STANDARD FEATURES

- Inside mount frame
- Aluminum extruded main frame
- White frame color
- Frame depth 2"
- 1" front installation flange
- Glazed with 10-mil clear vinyl
- Equal interlocking vents
- Tilt in, removable vents
- Spreader bar(s)
- Sizing
 - Opening size with a 3/8" deduction in width & height

OPTIONAL FEATURES

- Bronze, beige, or pebble khaki (driftwood) frame color
- Bronze, dark gray, or smoke gray 10-mil vinyl color
- Lip frame screen attached
- BetterVue® 2020, SunScreen®, 1814 or 1816 screen mesh
- Unequal vents
- Mixed vinyl color in vents
- 2, 3, and 4 vent configurations
- Sizing
 - Actual unit size with no deductions





Vertical Four-Track

Series 4V60

Inside Mount Guidelines

Information necessary for a complete and correct quote/order:

	Example:	Example:	Example:
1. Product / series number	4V60	4V60	4V60
2. Installation frame type	ISM	ISM	ISM
3. Unit configuration	Single	Single	Single
4. Size selection	Opening with 3/8" cutback	Opening with 3/8" cutback	Actual (No deductions)
5. Size	49 1/2" x 59"	26" x 54"	36" x 90"
6. Vent quantity	3	2	4
7. Vent configuration	Equal	Equal	Unequal (Bottom vent 18 1/4" height)
8. Spreader bar quantity	2	None	1
9. Frame color	White	Beige	Bronze
10. Vent glazing	Clear	Smoke Gray	Bronze
11. Screen configuration	Screen attached 1814G	Screen sent unattached BetterVue screen	No screen
12. All other desired options must be included at the time of order			

Note: Options not listed cannot be incorporated into your quote or order

Additional order and product information:

1. **Opening measurement is preferred:** Our standard cutback (deduction) is 3/8" and will be taken in both width and height. You may also order by actual unit size (not including installation flange).

2. To ensure exceptional product performance and functionality, spreader bars are required on actual unit widths that exceed 30" wide.

3. Sizes and configurations:	Minimum Actual Size :	Maximum Actual Size :
Single Unit		
4 vent	11.875" x 23 1/16"	72" x 113"
3 vent	11.875" x 17 13/16"	72" x 89 7/8"
2 vent	11.875" x 12 1/2"	72" x 60 3/8"
Screen Attached		Units up to 60" x 96" or 72" x 84"

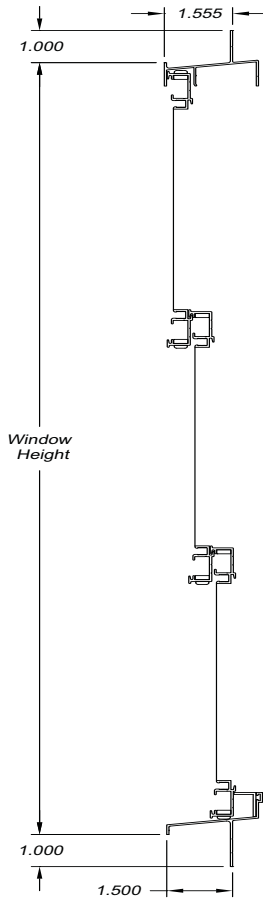
See Product Minimum and Maximum Guidelines on page 11

Vertical Four-Track

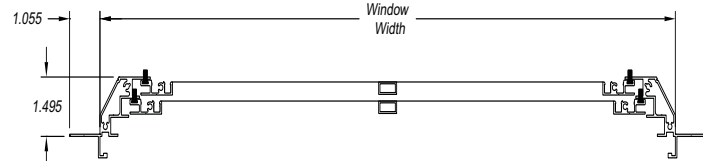
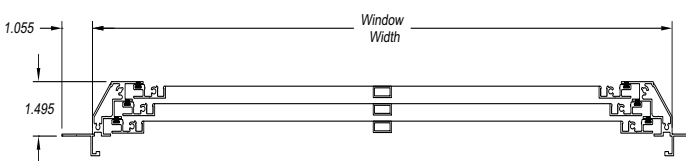
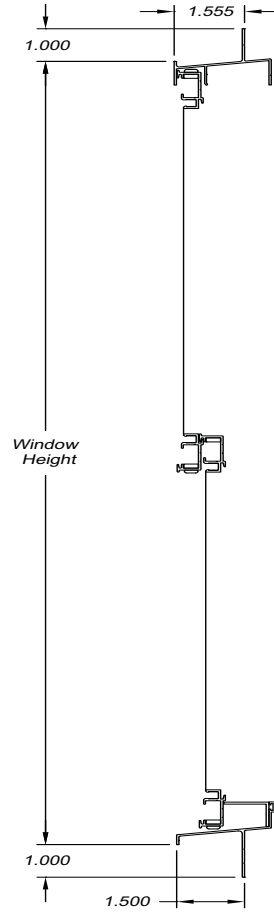
Series 4V60

Inside Mount Configurations

Vertical Four Track-3 vents



Vertical Four Track-2 vents





Vertical Four-Track

Series 4V60

Minimum and Maximum Guidelines

Vertical Four Track	SINGLE UNIT OPENING WIDTH (Inches)											
	12	18	24	30	36	42	48	54	60	66	72	
OPENING HEIGHT (Inches)	24	2 Vent 3 Vent 4 Vent	2 Vent 3 Vent 4 Vent	2 Vent 3 Vent 4 Vent	2 Vent 3 Vent 4 Vent	2 Vent 3 Vent 4 Vent	2 Vent 3 Vent 4 Vent	2 Vent 3 Vent 4 Vent	2 Vent 3 Vent 4 Vent	2 Vent 3 Vent	2 Vent 3 Vent	2 Vent 3 Vent
	30	2 Vent 3 Vent 4 Vent	2 Vent 3 Vent 4 Vent	2 Vent 3 Vent 4 Vent	2 Vent 3 Vent 4 Vent	2 Vent 3 Vent 4 Vent	2 Vent 3 Vent 4 Vent	2 Vent 3 Vent 4 Vent	2 Vent 3 Vent 4 Vent	2 Vent 3 Vent	2 Vent 3 Vent	2 Vent 3 Vent
	36	2 Vent 3 Vent 4 Vent	2 Vent 3 Vent 4 Vent	2 Vent 3 Vent 4 Vent	2 Vent 3 Vent 4 Vent	2 Vent 3 Vent 4 Vent	2 Vent 3 Vent 4 Vent	2 Vent 3 Vent 4 Vent	2 Vent 3 Vent 4 Vent	2 Vent 3 Vent 4 Vent	2 Vent 3 Vent	2 Vent 3 Vent
	42	2 Vent 3 Vent 4 Vent	2 Vent 3 Vent 4 Vent	2 Vent 3 Vent 4 Vent	2 Vent 3 Vent 4 Vent	2 Vent 3 Vent 4 Vent	2 Vent 3 Vent 4 Vent	2 Vent 3 Vent 4 Vent	2 Vent 3 Vent 4 Vent	2 Vent 3 Vent 4 Vent	2 Vent 3 Vent 4 Vent	2 Vent 3 Vent
	48	2 Vent 3 Vent 4 Vent	2 Vent 3 Vent 4 Vent	2 Vent 3 Vent 4 Vent	2 Vent 3 Vent 4 Vent	2 Vent 3 Vent 4 Vent	2 Vent 3 Vent 4 Vent	2 Vent 3 Vent 4 Vent	2 Vent 3 Vent 4 Vent	2 Vent 3 Vent 4 Vent	3 Vent 4 Vent	3 Vent 4 Vent
	54	2 Vent 3 Vent 4 Vent	2 Vent 3 Vent 4 Vent	2 Vent 3 Vent 4 Vent	2 Vent 3 Vent 4 Vent	2 Vent 3 Vent 4 Vent	2 Vent 3 Vent 4 Vent	2 Vent 3 Vent 4 Vent	2 Vent 3 Vent 4 Vent	3 Vent 4 Vent	3 Vent 4 Vent	3 Vent 4 Vent
	60	2 Vent 3 Vent 4 Vent	2 Vent 3 Vent 4 Vent	2 Vent 3 Vent 4 Vent	2 Vent 3 Vent 4 Vent	2 Vent 3 Vent 4 Vent	2 Vent 3 Vent 4 Vent	2 Vent 3 Vent 4 Vent	3 Vent 4 Vent	3 Vent 4 Vent	3 Vent 4 Vent	3 Vent 4 Vent
	66	3 Vent 4 Vent	3 Vent 4 Vent	3 Vent 4 Vent	3 Vent 4 Vent	3 Vent 4 Vent	3 Vent 4 Vent	3 Vent 4 Vent	3 Vent 4 Vent	3 Vent 4 Vent	3 Vent 4 Vent	4 Vent
	72	3 Vent 4 Vent	3 Vent 4 Vent	3 Vent 4 Vent	3 Vent 4 Vent	3 Vent 4 Vent	3 Vent 4 Vent	3 Vent 4 Vent	3 Vent 4 Vent	3 Vent 4 Vent	4 Vent	4 Vent
	78	3 Vent 4 Vent	3 Vent 4 Vent	3 Vent 4 Vent	3 Vent 4 Vent	3 Vent 4 Vent	3 Vent 4 Vent	3 Vent 4 Vent	3 Vent 4 Vent	4 Vent	4 Vent	4 Vent
	84	3 Vent 4 Vent	3 Vent 4 Vent	3 Vent 4 Vent	3 Vent 4 Vent	3 Vent 4 Vent	3 Vent 4 Vent	3 Vent 4 Vent	3 Vent 4 Vent	4 Vent	4 Vent	4 Vent
	90	4 Vent	4 Vent	4 Vent	4 Vent	4 Vent	4 Vent	4 Vent	4 Vent	4 Vent	4 Vent	Not Available
	96	4 Vent	4 Vent	4 Vent	4 Vent	4 Vent	4 Vent	4 Vent	4 Vent	4 Vent	Not Available	Not Available
	102	4 Vent	4 Vent	4 Vent	4 Vent	4 Vent	4 Vent	4 Vent	4 Vent	4 Vent	Not Available	Not Available
106	4 Vent	4 Vent	4 Vent	4 Vent	4 Vent	4 Vent	4 Vent	4 Vent	Not Available	Not Available	Not Available	
113	4 Vent	4 Vent	4 Vent	4 Vent	4 Vent	4 Vent	4 Vent	4 Vent	Not Available	Not Available	Not Available	

To use this chart with twin and triple units do the following:

Twin unit: divide opening width by 2 then locate that size on the chart above

Triple unit: divide opening width by 3 then locate that size on the chart above

Horizontal Side Slider

Series SS10

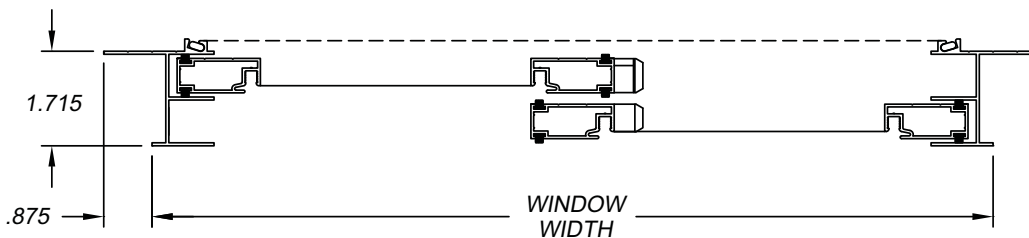
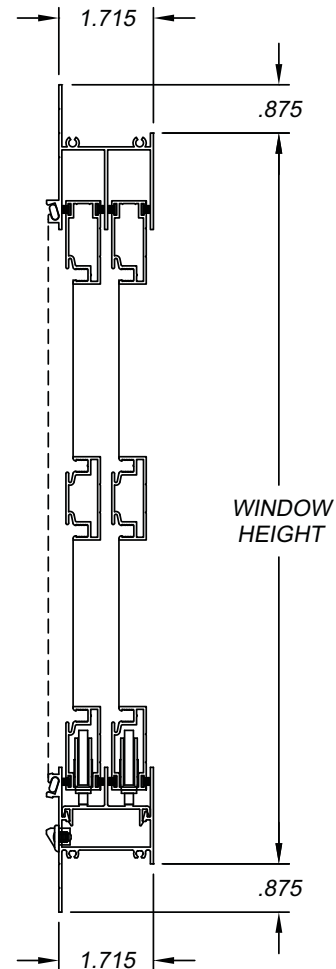
Outside Mount Features

STANDARD FEATURES

- Outside mount frame
- Aluminum extruded main frame
- White frame color
- 2-track frame depth 1-5/8"
- 4-track frame depth 3-3/8"
- 7/8" front installation flange
- Tank sill with flange
- Glazed with 10-mil clear vinyl
- Equal removable vents
- Factory installed swivel latches
- Spreader bar(s)
- 1814 charcoal screen rolled-in frame
- Neoprene rollers
- Sizing
 - Opening size with 1/8" deduction in width & height

OPTIONAL FEATURES

- Bronze, beige, or pebble khaki (driftwood) frame color
- Bronze, dark gray, or smoke gray 10-mil vinyl color
- BetterVue® 2020, SunScreen®, and 1816 screen mesh
- Unequal vents
- Pull handle
- Mixed vinyl color in vents
- Configurations with up to 10 vents
- Stacked, staggered, pyramid, condo, and pocket configurations
- Standard or reverse stack
- Sizing
 - Opening size with a 1/4" deduction in width & height
 - Actual unit size with no deductions





Horizontal Side Slider

Series SS10

Outside Mount Guidelines

Information necessary for a complete and correct quote/order:

	Example:	Example:	Example:
1. Product / series number	SS10	SS10	SS10
2. Track quantity	2 track	4 track	2 track
3. Vent quantity	2 vent	6 vent	10 vent
4. Installation frame type	OSM	OSM	OSM
5. Size selection	Opening with 1/4"cutback	Opening with 1/8"cutback	Actual (No deductions)
6. Size	46" x 79 1/2"	165" x 82"	240" x 98"
7. Unit configuration	Standard	Condo	Standard
8. Vent configuration	Stacked	Pyramid	Staggered
9. Vent stack	Standard	Standard	Reverse
10. Frame color	White	Beige	Pebble khaki
11. Vent glazing	Vinyl	Vinyl	Mixed vinyl
12. Vinyl color or screen options	Clear	Smoke gray	Clear above the spreader bar and dark gray below the spreader bar
13. Spreader bar quantity	1	1	1
14. Screen configuration	Rolled- in frame	No screen	No screen
15. Screen option	1814C	None	None
16. All other desired options must be included at the time of order			KD unit

Note: Options not listed cannot be incorporated into your quote or order

Additional order and product information:

- Opening measurement is preferred:** Our standard cutback (deduction) is 1/8" and will be taken in both width and height. Or you may choose one of our other options: 1/4" cutback or actual unit size (not including installation flange).
- Screen rolled into frame maximum size is 84" x 96" or 96" x 84"
- To ensure exceptional product performance and functionality spreader bars are required on actual unit heights that exceed 48" tall.

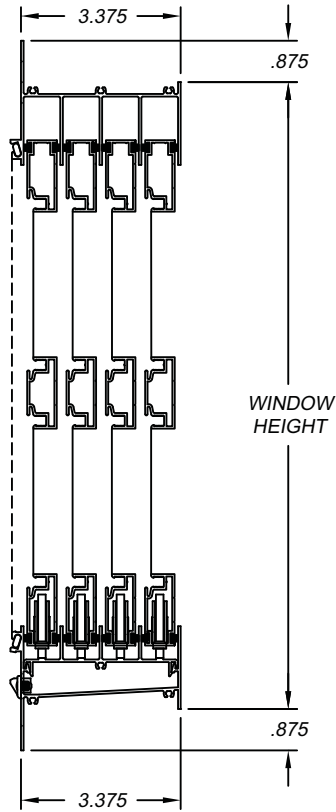
See 2-Track & 4-Track configuration pages 24 - 27 for minimum and maximum size details.

Horizontal Side Slider

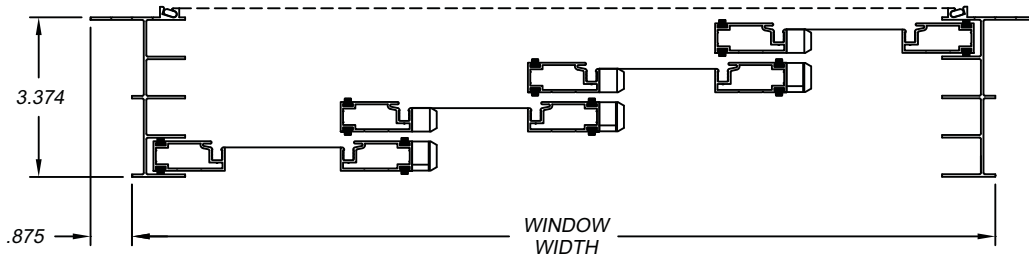
Series SS10

Outside Mount Configurations

4- Track Horizontal Side Slider



4- Track Horizontal Side Slider

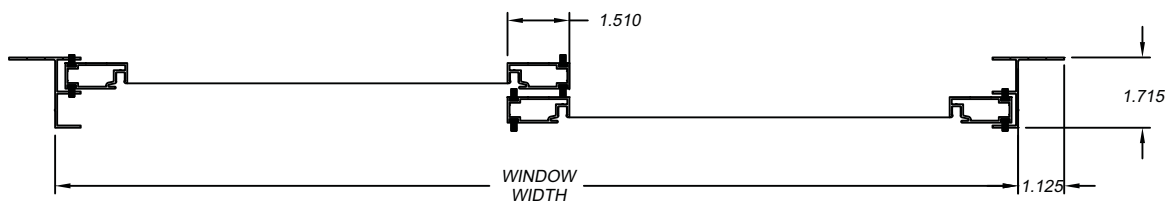
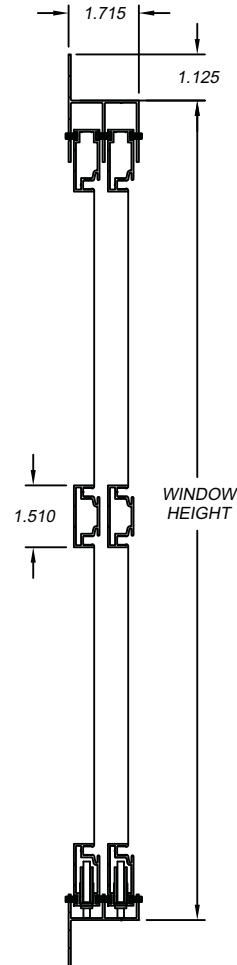


STANDARD FEATURES

- Inside mount frame
- Aluminum extruded main frame
- White frame color
- 2-track frame depth 1-5/8"
- 4-track frame depth 3-3/8"
- 1-1/8" front installation flange
- Sill with flange
- Glazed with 10-mil clear vinyl
- Equal removable vents
- Factory installed swivel latches
- Spreader bar(s)
- Neoprene rollers
- Sizing
 - Opening size with a 3/8" deduction in width & height

OPTIONAL FEATURES

- Bronze, beige, or pebble khaki (driftwood) frame color
- Bronze, dark gray, or smoke gray 10-mil vinyl color
- Lip frame screen attached
- BetterVue® 2020, SunScreen®, 1814 or 1816 screen mesh
- Unequal vents
- Pull handle
- Mixed vinyl color in vents
- Configurations with up to 10 vents
- Stacked, staggered, pyramid, condo, and pocket configurations
- Standard or reversed stack
- Regular or reverse mounting
- Sizing
 - Actual unit size with no deductions





Horizontal Side Slider

Series SS10

Inside Mount Guidelines

Information necessary for a complete and correct quote/order:

	Example:	Example:	Example:
1. Product / series number	SS10	SS10	SS10
2. Track quantity	2 track	4 track	2 track
3. Vent quantity	2 vent	6 vent	10 vent
4. Installation frame type	ISM	ISM	ISM
5. Unit mounted	Regular	Reverse	Regular
6. Size Selection	Opening with 3/8" cutback	Opening with 3/8" cutback	Actual (No deductions)
7. Size	46" x 79 1/2"	165" x 82"	240" x 98"
8. Unit configuration	Standard	Condo	Standard
9. Vent configuration	Stacked	Pyramid	Staggered
10. Vent stack	Standard	Standard	Reverse
11. Frame color	White	Beige	Pebble khaki
12. Vent glazing	Vinyl	Screen	Mixed vinyl
13. Vinyl color or screen options	Clear	White sunscreen	Clear above the spreader bar and dark gray below the spreader bar
14. Spreader bar quantity	1	1	1
15. Screen configuration	Attached lip frame screen	None	No screen
16. Screen option	1814C	None	None
17. All other desired options must be included at the time of order			KD unit

Note: Options not listed cannot be incorporated into your quote or order

Additional order and product information:

- Opening measurement is preferred:** Our standard cutback (deduction) is 3/8" and will be taken in both width and height. You may also order by actual unit size (not including installation flange).
- Lip frame screen attached maximum size is 84" x 96" or 96" x 84"
- To ensure exceptional product performance and functionality, spreader bars are required on actual unit heights that exceed 48" tall.
- Mounting applications must be specified upon ordering to ensure proper weephole placement. See page 3 for details.

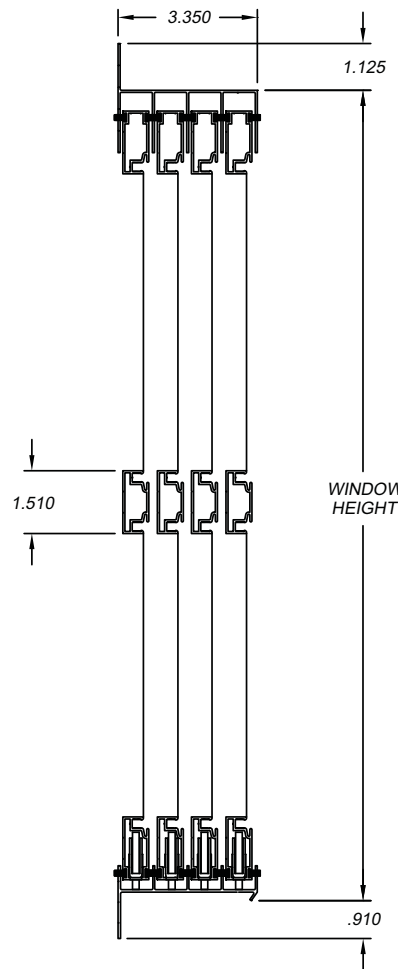
See 2-Track & 4-Track configuration pages 24 - 27 for minimum and maximum details.

Horizontal Side Slider Garage Door Screen

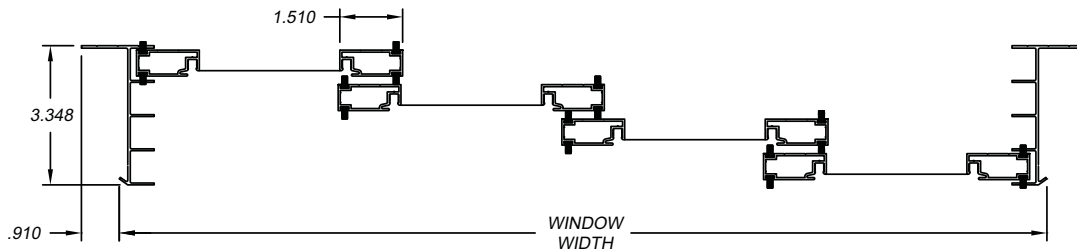
Series SS10

Inside Mount Configurations

4-Track Horizontal Side Slider



4-Track Horizontal Side Slider

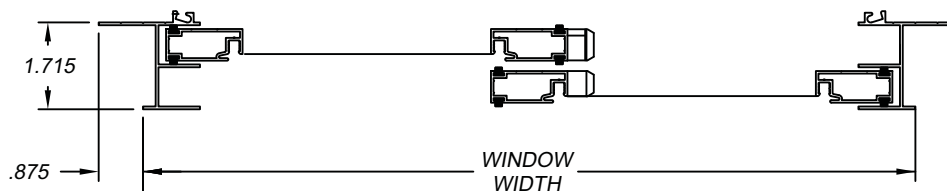
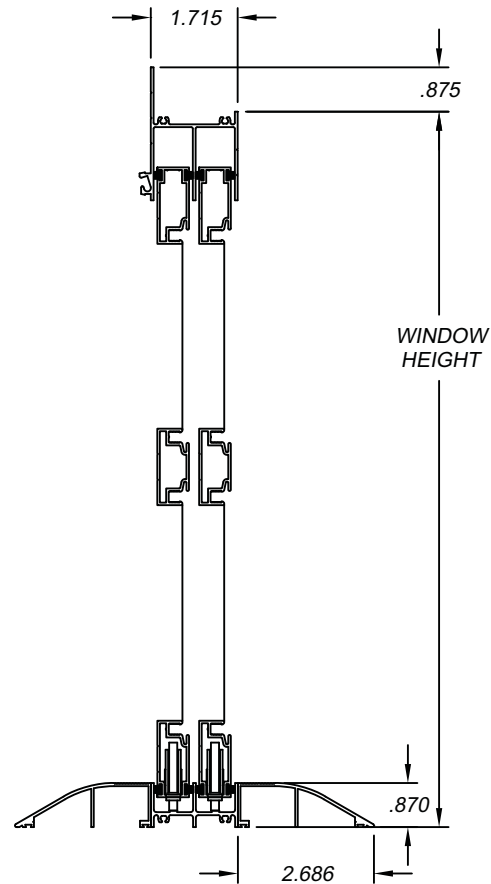


STANDARD FEATURES

- Outside mount frame
- Aluminum extruded main frame
- White frame color
- 2-track frame depth 1-5/8"
- 4-track frame depth 3-3/8"
- 7/8" front installation flange
- Sill without flange and threshold both sides
- Glazed with 1814 charcoal screen mesh
- Equal removable vents
- Swivel latches sent for field installation
- Spreader bar(s)
- Neoprene rollers
- Factory installed thumb pulls
- Sizing
 - Opening size with 1/8" deduction in width & height

OPTIONAL FEATURES

- Bronze, beige, or pebble khaki (driftwood) frame color
- Clear, bronze, dark gray, or smoke gray 10-mil vinyl color
- BetterVue® 2020, SunScreen®, and 1816 screen mesh
- Kickplate 8, 12" or 16"
- Unequal vents
- Pull handle
- Threshold one side or none
- Configurations with up to 10 vents
- Stacked, staggered, pyramid, condo, and pocket configurations
- Standard or reverse stack
- Factory installed swivel latches or none
- Sizing
 - Opening size with a 1/4" deduction in width & height
 - Actual unit size with no deductions





Horizontal Side Slider Garage Door Screen

Series SS30

Outside Mount Guidelines

Information necessary for a complete and correct quote/order:

	Example:	Example:	Example:
1. Product / series number	SS30	SS30	SS30
2. Track quantity	2 track	4 track	4 track
3. Vent quantity	2 vent	4 vent	10 vent
4. Installation frame type	OSM	OSM	OSM
5. Size selection	Opening with 1/8" cutback	Opening with 1/4" cutback	Actual (No deductions)
6. Size	46" x 79 1/2"	165" x 82"	240" x 98"
7. Unit configuration	Standard	Standard	Standard
8. Vent configuration	Stacked	Pyramid	Staggered
9. Vent stack	Standard	Standard	Reverse
10. Frame color	White	Beige	Pebble khaki
11. Vent glazing	Screen	Vinyl	Screen
12. Vinyl color or screen options	1814C	Smoke gray	BetterVue 2020
13. Spreader bar quantity	1	1	1
14. Kickplate height	12"	8"	16"
15. Threshold options	On both sides of sill	None	On one side of sill
16. Screen configuration			
17. Screen option			KD unit
18. All other desired options must be included at the time of order			

Note: Options not listed cannot be incorporated into your quote or order

Additional order and product information:

- Opening measurement is preferred:** Our standard cutback (deduction) is 1/8" and will be taken in both width and height. You may choose one of our other options: 1/4" cutback or actual unit size (not including installation flange).
- To ensure exceptional product performance and functionality, spreader bars are required on actual unit heights that exceed 48" tall

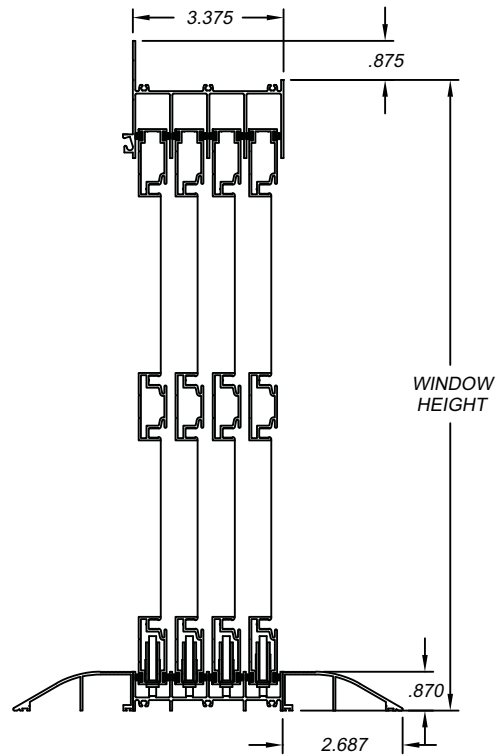
See 2-Track & 4-Track configuration pages 24 - 27 for minimum and maximum size details.

Horizontal Side Slider Garage Door Screen

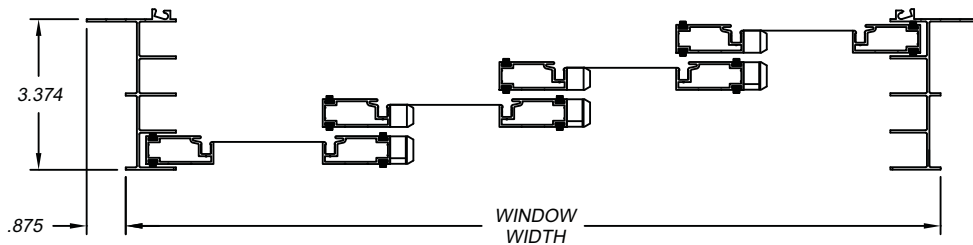
Series SS30

Outside Mount Configurations

4- Track Horizontal Side Slider



4- Track Horizontal Side Slider

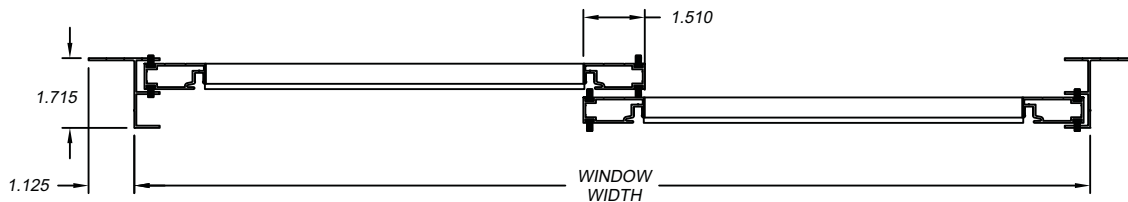
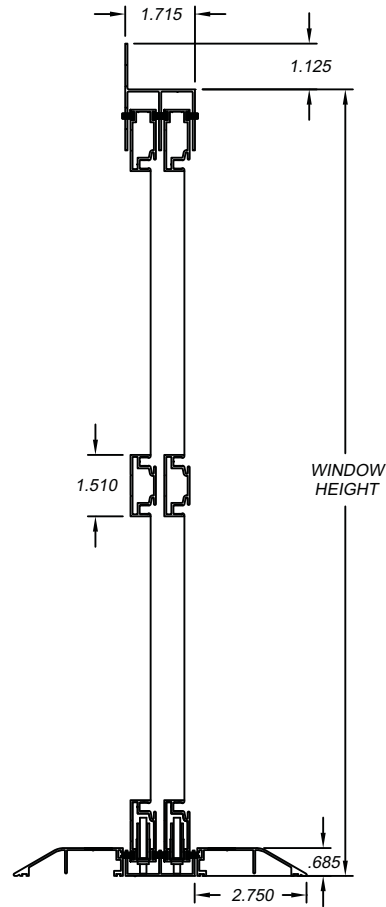


STANDARD FEATURES

- Inside mount frame
- Aluminum extruded main frame
- White frame color
- 2-track frame depth 1-5/8"
- 4-track frame depth 3-3/8"
- 1-1/8" front installation flange
- Sill without flange and threshold both sides
- Glazed with 1814 charcoal screen mesh
- Equal removable vents
- Swivel latches sent for field installation
- Spreader bar(s)
- Neoprene rollers
- Factory installed thumb pulls
- Sizing
 - Opening size with 1/8" deduction in width & height

OPTIONAL FEATURES

- Bronze, beige, or pebble khaki (driftwood) frame color
- Clear, bronze, dark gray, or smoke gray 10-mil vinyl color
- BetterVue® 2020, SunScreen®, and 1816 screen mesh
- Kickplate 8, 12" or 16"
- Unequal vents
- Pull handle
- Threshold one side or none
- Configurations with up to 10 vents
- Stacked, staggered, pyramid, condo, and pocket configurations
- Standard or reversed stack
- Regular or reverse mounting
- Factory installed swivel latches or none
- Sizing
 - Actual unit size with no deductions





Horizontal Side Slider Garage Door Screen

Series SS30

Inside Mount Guidelines

Information necessary for a complete and correct quote/order:

	Example:	Example:	Example:
1. Product / series number	SS30	SS30	SS30
2. Track quantity	2 track	4 track	4 track
3. Vent quantity	2 vent	4 vent	10 vent
4. Installation frame type	ISM	ISM	ISM
5. Size selection	Opening with 1/4" cutback	Opening with 3/8" cutback	Actual (No deductions)
6. Size	46" x 79 1/2"	165" x 82"	240" x 98"
7. Unit configuration	Standard	Standard	Standard
8. Vent configuration	Stacked	Pyramid	Staggered
9. Vent stack	Standard	Standard	Reverse
10. Frame color	White	Beige	Pebble khaki
11. Vent Glazing	Vinyl	Screen	Mixed vinyl / screen
12. Vinyl color or screen options	Clear	White sunscreen	1814C above the spreader bar and dark gray below the spreader bar
13. Spreader bar quantity	1	1	1
14. Kickplate height	12"	8"	16"
15. Threshold options	None	On both sides	On both sides
16. All other desired options must be included at the time of order			

Note: Options not listed cannot be incorporated into your quote or order

Additional order and product information:

- Opening measurement is preferred:** Our standard cutback (deduction) is 1/4" and will be taken in both width and height. You may also order by actual unit size (not including flange).
- To ensure exceptional product performance and functionality, spreader bars are required on actual unit heights that exceed 48" tall.
- Mounting applications must be specified upon ordering to ensure proper weep-hole placement. *See page 3 for details.*

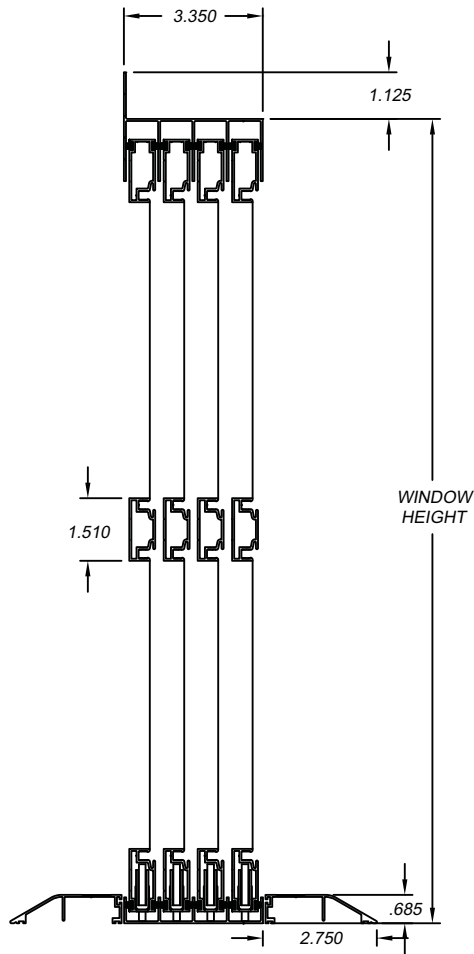
See 2-Track & 4-Track configuration pages 24 - 27 for minimum and maximum size details.

Horizontal Side Slider Garage Door Screen

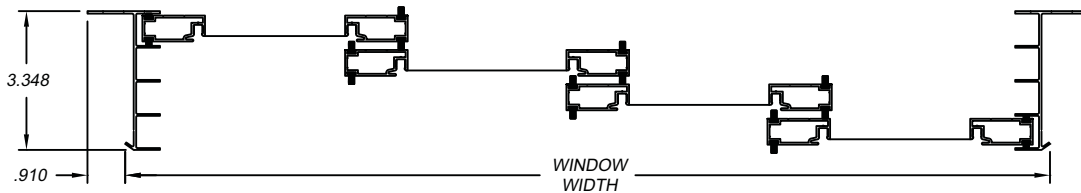
Series SS30

Inside Mount Configurations

4- Track Horizontal Side Slider



4- Track Horizontal Side Slider





Side Slider 2-Track & 4-Track Configurations

2-TRACK UNIT CONFIGURATIONS - STACKED

Vent Qty/Configuration	Standard Vent Stack	Reverse Vent Stack	Opening Sizes
2 Vent 2T2V Stacked			Min (Vinyl / Screen) 24" x 10" Max w/Vinyl Vents 108" x 108" Max w/Screen Vents 120" x 108"
3 Vent 2T3V Stacked			Min (Vinyl / Screen) 36" x 10" Max w/Vinyl Vents 162" x 108" Max w/Screen Vents 180" x 108"
4 Vent 2T4V Stacked			Min (Vinyl / Screen) 48" x 10" Max w/Vinyl Vents 216" x 108" Max w/Screen Vents 240" x 108"
6 Vent 2T6V Stacked			Min (Vinyl / Screen) 72" x 10" Max w/Vinyl Vents 240" x 108" Max w/Screen Vents 240" x 108"
8 Vent 2T8V Stacked			Min (Vinyl / Screen) 96" x 10" Max w/Vinyl Vents 240" x 108" Max w/Screen Vents 240" x 108"

2-TRACK UNIT CONFIGURATIONS - STAGGERED

Vent Qty/Configuration	Standard Vent Stack	Reverse Vent Stack	Opening Sizes
4 Vent 2T4V Staggered			Min (Vinyl / Screen) 48" x 10" Max w/Vinyl Vents 216" x 108" Max w/Screen Vents 240" x 108"
5 Vent 2T5V Staggered			Min (Vinyl / Screen) 60" x 10" Max w/Vinyl Vents 240" x 108" Max w/Screen Vents 240" x 108"
6 Vent 2T6V Staggered			Min (Vinyl / Screen) 72" x 10" Max w/Vinyl Vents 240" x 108" Max w/Screen Vents 240" x 108"
7 Vent 2T7V Staggered			Min (Vinyl / Screen) 84" x 10" Max w/Vinyl Vents 240" x 108" Max w/Screen Vents 240" x 108"
8 Vent 2T8V Staggered			Min (Vinyl / Screen) 96" x 10" Max w/Vinyl Vents 240" x 108" Max w/Screen Vents 240" x 108"
10 Vent 2T10V Staggered			Min (Vinyl / Screen) 120" x 10" Max w/Vinyl Vents 240" x 108" Max w/Screen Vents 240" x 108"

2-TRACK UNIT CONFIGURATIONS - PYRAMID

Vent Qty/Configuration	Standard Vent Stack	Reverse Vent Stack	Opening Sizes
3 Vent 2T3V Pyramid			Min (Vinyl / Screen) 36" x 10" Max w/Vinyl Vents 162" x 108" Max w/Screen Vents 180" x 108"
4 Vent 2T4V Pyramid			Min (Vinyl / Screen) 48" x 10" Max w/Vinyl Vents 216" x 108" Max w/Screen Vents 240" x 108"
6 Vent 2T6V Pyramid			Min (Vinyl / Screen) 72" x 10" Max w/Vinyl Vents 240" x 108" Max w/Screen Vents 240" x 108"
9 Vent 2T9V Pyramid			Min (Vinyl / Screen) 108" x 10" Max w/Vinyl Vents 240" x 108" Max w/Screen Vents 240" x 108"



Side Slider 2-Track & 4-Track Configurations

2-TRACK UNIT CONFIGURATIONS - CONDO STACKED

Vent Qty/Configuration	Standard Vent Stack	Reverse Vent Stack	Opening Sizes
3 Vent 2T3V Condo Stacked			Min (Vinyl / Screen) 24" x 10" Max (Vinyl Vents) 108" x 108" Max (Screen Vents) 120" x 108"
4 Vent 2T4V Condo Stacked			Min (Vinyl / Screen) 36" x 10" Max w/Vinyl Vents 162" x 108" Max w/Screen Vents 180" x 108"
6 Vent 2T6V Condo Stacked			Min (Vinyl / Screen) 48" x 10" Max w/Vinyl Vents 216" x 108" Max w/Screen Vents 240" x 108"
9 Vent 2T9V Condo Stacked			Min (Vinyl / Screen) 72" x 10" Max w/Vinyl Vents 240" x 108" Max w/Screen Vents 240" x 108"

2-TRACK UNIT CONFIGURATIONS - CONDO STAGGERED

Vent Qty/Configuration	Standard Vent Stack	Reverse Vent Stack	Opening Sizes
6 Vent 2T6V Condo Staggered			Min (Vinyl / Screen) 48" x 10" Max w/Vinyl Vents 216" x 108" Max w/Screen Vents 240" x 108"
9 Vent 2T9V Condo Staggered			Min (Vinyl / Screen) 72" x 10" Max w/Vinyl Vents 240" x 108" Max w/Screen Vents 240" x 108"

2-TRACK UNIT CONFIGURATIONS - CONDO PYRAMID

Vent Qty/Configuration	Standard Vent Stack	Reverse Vent Stack	Opening Sizes
4 Vent 2T4V Condo Pyramid		N/A	Min (Vinyl / Screen) 36" x 10" Max w/Vinyl Vents 162" x 108" Max w/Screen Vents 180" x 108"
6 Vent 2T6V Condo Pyramid		N/A	Min (Vinyl / Screen) 48" x 10" Max w/Vinyl Vents 216" x 108" Max w/Screen Vents 240" x 108"
8 Vent 2T8V Condo Pyramid		N/A	Min (Vinyl / Screen) 72" x 10" Max w/Vinyl Vents 240" x 108" Max w/Screen Vents 240" x 108"

2-TRACK UNIT CONFIGURATIONS - POCKET

Vent Qty/Configuration	Standard Vent Stack	Reverse Vent Stack	Opening Sizes
2 Vent 2T2V Stacked Single Pocket (Viewed from inside - Pocket Left shown)			Min (Vinyl / Screen) 24" x 10" Max w/Vinyl Vents 108" x 108" Max w/Screen Vents 120" x 108"
2 Vent 2T2V Stacked Double Pocket		N/A	Min (Vinyl / Screen) 24" x 10" Max w/Vinyl Vents 108" x 108" Max w/Screen Vents 120" x 108"
3 Vent 2T3V Pyramid Double Pocket		N/A	Min (Vinyl / Screen) 36" x 10" Max w/Vinyl Vents 162" x 108" Max w/Screen Vents 180" x 108"
4 Vent 2T4V Pyramid Double Pocket		N/A	Min (Vinyl / Screen) 48" x 10" Max w/Vinyl Vents 216" x 108" Max w/Screen Vents 240" x 108"



Side Slider 2-Track & 4-Track Configurations

4-TRACK UNIT CONFIGURATIONS - STACKED

Vent Qty/Configuration	Standard Vent Stack	Reverse Vent Stack	Opening Sizes
3 Vent 4T3V Stacked			Min (Vinyl / Screen) 36" x 10" Max w/Vinyl Vents 162" x 108" Max w/Screen Vents 180" x 108"
4 Vent 4T4V Stacked			Min (Vinyl / Screen) 48" x 10" Max w/Vinyl Vents 216" x 108" Max w/Screen Vents 240" x 108"
5 Vent 4T5V Stacked			Min (Vinyl / Screen) 60" x 10" Max w/Vinyl Vents 240" x 108" Max w/Screen Vents 240" x 108"

4-TRACK UNIT CONFIGURATIONS - PYRAMID

Vent Qty/Configuration	Standard Vent Stack	Reverse Vent Stack	Opening Sizes
5 Vent 4T5V Pyramid			Min (Vinyl / Screen) 72" x 10" Max w/Vinyl Vents 240" x 108" Max w/Screen Vents 240" x 108"
6 Vent 4T6V Pyramid			Min (Vinyl / Screen) 72" x 10" Max w/Vinyl Vents 240" x 108" Max w/Screen Vents 240" x 108"
8 Vent 4T8V Pyramid			Min (Vinyl / Screen) 96" x 10" Max w/Vinyl Vents 240" x 108" Max w/Screen Vents 240" x 108"

4-TRACK UNIT CONFIGURATIONS - CONDO STACKED

Vent Qty/Configuration	Standard Vent Stack	Reverse Vent Stack	Opening Sizes
3 Vent 4T3V Condo Stacked			Min (Vinyl / Screen) 24" x 10" Max w/Vinyl Vents 108" x 108" Max w/Screen Vents 120" x 108"
4 Vent 4T4V Condo Stacked Fixed Screen			Min (Vinyl / Screen) 24" x 10" Max w/Vinyl Vents 108" x 108" Max w/Screen Vents 120" x 108"
4 Vent 4T4V Condo Stacked Operable Screen			Min (Vinyl / Screen) 24" x 10" Max w/Vinyl Vents 108" x 108" Max w/Screen Vents 120" x 108"
5 Vent 4T5V Condo Stacked			Min (Vinyl / Screen) 60" x 10" Max w/Vinyl Vents 162" x 108" Max w/Screen Vents 240" x 108"
6 Vent 4T6V Condo Stacked			Min (Vinyl / Screen) 72" x 10" Max w/Vinyl Vents 162" x 108" Max w/Screen Vents 240" x 108"
7 Vent 4T7V Condo Stacked			Min (Vinyl / Screen) 72" x 10" Max w/Vinyl Vents 216" x 108" Max w/Screen Vents 240" x 108"
9 Vent 4T9V Condo Stacked			Min (Vinyl / Screen) 108" x 10" Max w/Vinyl Vents 240" x 108" Max w/Screen Vents 240" x 108"



Side Slider 2-Track & 4-Track Configurations

4-TRACK UNIT CONFIGURATIONS - CONDO STAGGERED

Vent Qty/Configuration	Standard Vent Stack	Reverse Vent Stack	Opening Sizes
8 Vent 4T8V Condo Staggered			Min (Vinyl / Screen) 48" x 10" Max w/Vinyl Vents 216" x 108" Max w/Screen Vents 240" x 108"

4-TRACK UNIT CONFIGURATIONS - CONDO PYRAMID

Vent Qty/Configuration	Standard Vent Stack	Reverse Vent Stack	Opening Sizes
6 Vent 4T6V Condo Pyramid		N/A	Min (Vinyl / Screen) 36" x 10" Max w/Vinyl Vents 162" x 108" Max w/Screen Vents 180" x 108"
8 Vent 4T8V Condo Pyramid		N/A	Min (Vinyl / Screen) 60" x 10" Max w/Vinyl Vents 240" x 108" Max w/Screen Vents 240" x 108"
10 Vent 4T10V Condo Pyramid		N/A	Min (Vinyl / Screen) 60" x 10" Max w/Vinyl Vents 240" x 108" Max w/Screen Vents 240" x 108"

4-TRACK UNIT CONFIGURATIONS - POCKET

Vent Qty/Configuration	Standard Vent Stack	Reverse Vent Stack	Opening Sizes
3 Vent 4T3V Stacked Single Pocket (Viewed from inside - Pocket Left shown)			Min (Vinyl / Screen) 36" x 10" Max w/Vinyl Vents 162" x 108" Max w/Screen Vents 180" x 108"
4 Vent 4T4V Stacked Single Pocket (Viewed from inside - Pocket Left shown)			Min (Vinyl / Screen) 48" x 10" Max w/Vinyl Vents 216" x 108" Max w/Screen Vents 240" x 108"
6 Vent 4T6V Pyramid Double Pocket		N/A	Min (Vinyl / Screen) 72" x 10" Max w/Vinyl Vents 240" x 108" Max w/Screen Vents 240" x 108"
8 Vent 4T8V Pyramid Double Pocket		N/A	Min (Vinyl / Screen) 96" x 10" Max w/Vinyl Vents 240" x 108" Max w/Screen Vents 240" x 108"

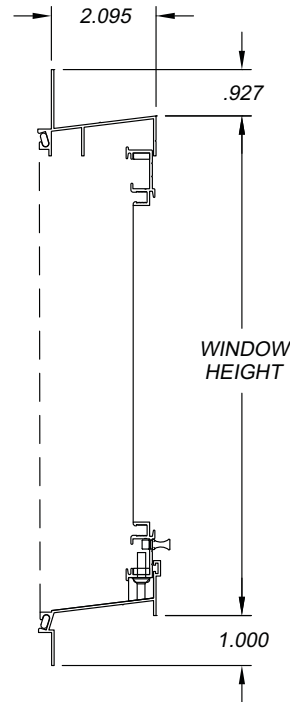
Removable Vent Fixed Lite

Series RV20

Outside Mount Features

STANDARD FEATURES

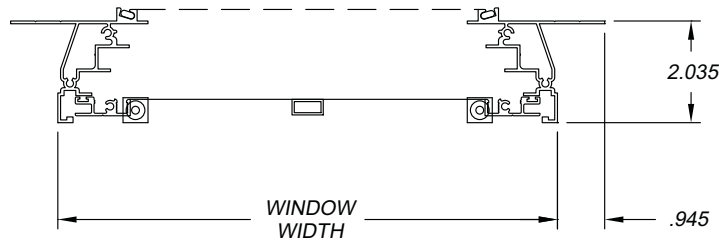
- Outside mount frame
- Aluminum extruded main frame
- White frame color
- Frame depth 2"
- 1" front installation flange
- Glazed with 10-mil clear vinyl
- Tilt in, removable vent
- Spreader bar(s)
- 1814 charcoal screen rolled-in frame
- Sizing
 - Opening size with 1/8" deduction in width & height



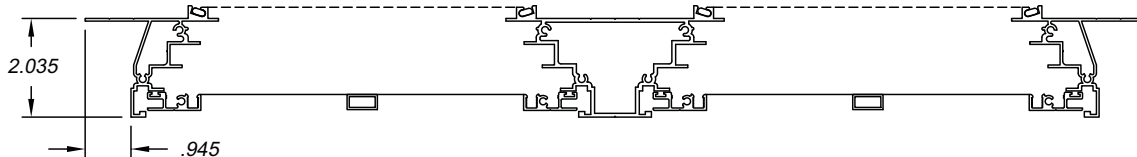
OPTIONAL FEATURES

- Bronze, beige, pebble khaki (driftwood) frame color
- Bronze, dark gray, or smoke gray 10-mil vinyl color
- BetterVue® 2020, SunScreen®, and 1816 screen mesh
- 2 Vent Stereo (twin), 3 Vent Stereo (triple)
- Sizing
 - Opening size with 1/4" deduction in width & height
 - Actual unit size with no deductions

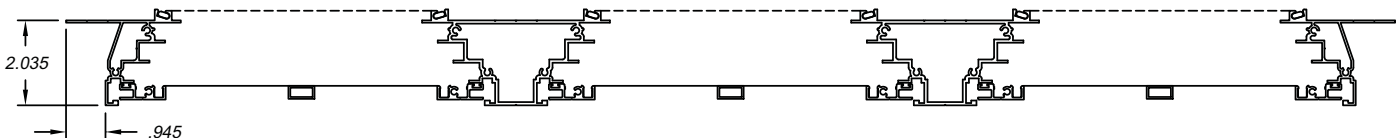
Single



Twin



Triple





Removable Vent Fixed Lite

Series RV20

Outside Mount Guidelines

Information necessary for a complete and correct quote/order:

	Example:	Example:	Example:
1. Product / series number	RV20	RV20	RV20
2. Unit configuration	Single	Twin	Triple
3. Size selection	Opening with 1/4" cutback	Opening with 1/8" cutback	Actual (No deductions)
4. Size	49 1/2" x 18"	80" x 32"	140" x 25"
5. Spreader bar quantity	2	1	1
6. Frame color	White	Beige	Bronze
7. Vent glazing	Clear	Smoke gray	Bronze
8. Screen configuration	Rolled-in frame 1814C	Rolled - in frame BetterVue	No screen
9. All other desired options must be included at the time of order			

Note: Options not listed cannot be incorporated into your quote or order

Additional order and product information:

- Opening measurement is preferred:** Our standard cutback (deduction) is 1/8" and will be taken in both width and height. You may choose one of our other options: 1/4" cutback or actual unit size (not including installation flange).
- To ensure exceptional product performance and functionality, spreader bars are required on actual unit widths that exceed 30" wide.

3. Sizes and configurations:	Minimum Actual Size :	Maximum Actual Size :
Single Unit	12" x 8"	72" x 32"
Twin Unit	42" x 8"	108" x 32"
Triple Unit	72" X 8"	144" x 32"

Heavy Duty Lip Frame Fixed Lite

Series HLF20

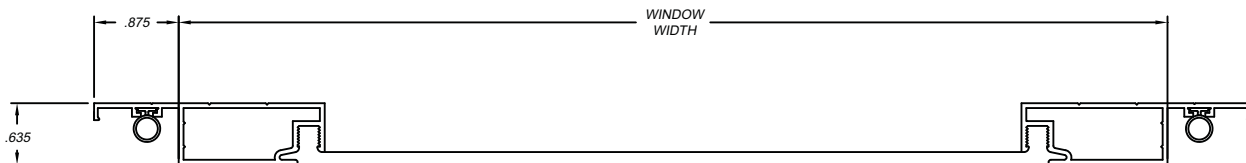
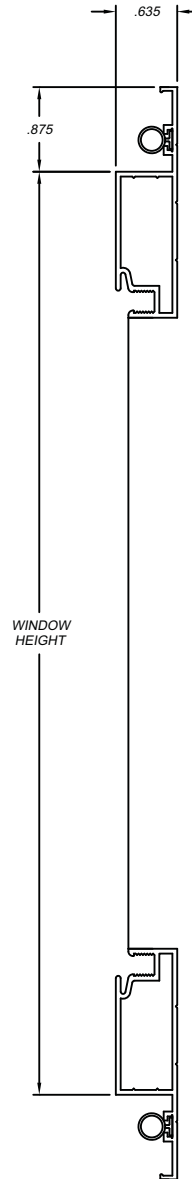
Features

STANDARD FEATURES

- Aluminum extruded main frame
- White frame color
- Frame depth 5/8"
- 7/8" front installation flange
- Glazed with 10-mil clear vinyl
- Spreader bar(s)
- Fully weatherstripped frame
- Sizing
 - Opening size with 1/8" deduction in width & height

OPTIONAL FEATURES

- Bronze, beige, or pebble khaki (driftwood) frame color
- Bronze, dark gray, or smoke gray 10-mil vinyl color
- BetterVue® 2020, SunScreen®, 1814 or 1816 screen mesh
- Available as a trapezoid shape
- Sizing
 - Opening size with a 1/4" deduction in width & height
 - Opening size with 3/8" deduction in width & height
 - Actual unit size with no deductions





Heavy Duty Lip Frame Fixed Lite

Series HLF20

Guidelines

Information necessary for a complete and correct quote/order:

	Example:	Example:	Example:
1. Product / series number	HLF20	HLF20	HLF20
2. Size selection	Opening with 1/4" cutback	Opening with 3/8" cutback	Actual (No deductions)
3. Size	49 1/2" x 18"	84" x 62.5"	25" x 124"
4. Frame color	White	Beige	Pebble khaki
5. Vent glazing	Clear	Smoke gray	Bronze
6. Spreader bar quantity	1 vertical	2 vertical	2 horizontal
7. All other desired options must be included at the time of order			

Note: Options not listed cannot be incorporated into your quote or order

Additional order and product information:

1. **Opening measurement is preferred:** Our standard cutback (deduction) is 1/8" and will be taken in both width and height. You may choose one of our other options: 1/4", 3/8" cutback, or actual unit size (not including installation flange).

2. To ensure exceptional product performance and functionality, spreader bars are required on actual unit size that exceed 60" x 48" or 48" x 60".

3. Sizes and configurations:	Minimum Actual Size :	Maximum Actual Size :
Lip Frame with (vinyl)	5 1/2" x 5 1/2"	144" x 50 1/2" or 50.5" x 144"
Lip Frame with (screen)	5 1/2" x 5 1/2"	124" x 84" or 84" x 124"
Trapezoid with (vinyl)	5 1/2" x 5 1/2" w/ min leg height of 4"	144" x 50.5" or 50.5" x 144"
Trapezoid with (screen)	5 1/2" x 5 1/2" w/ min leg height of 4"	124" x 84" or 84" x 124"

Standard Lip Frame Fixed Lite

Series LF20

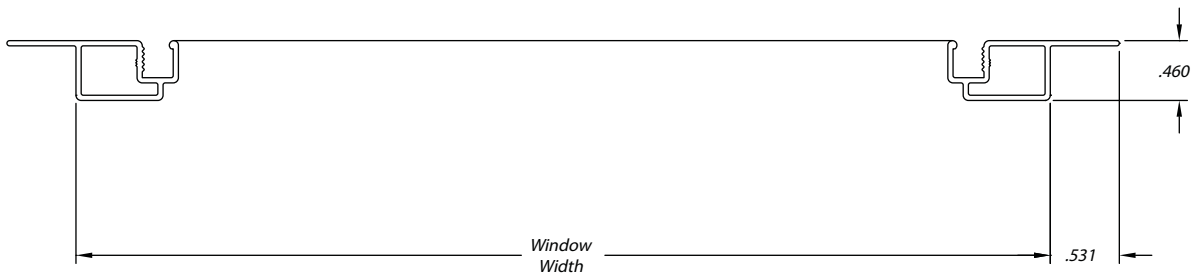
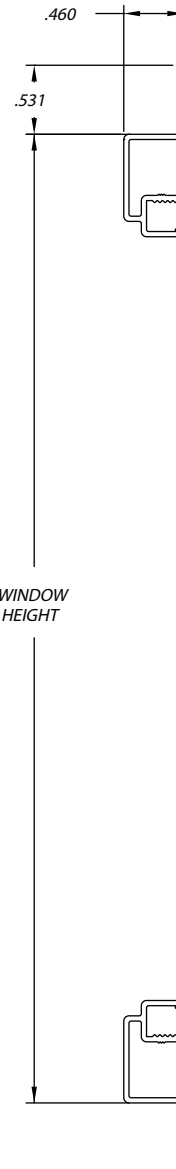
Features

STANDARD FEATURES

- Aluminum extruded main frame
- White frame color
- Frame depth 7/16"
- 1/2" front installation flange
- Glazed with 10-mil clear vinyl
- Spreader bar(s)
- Foam tape factory applied
- Sizing
 - Opening size with 1/8" deduction in width & height

OPTIONAL FEATURES

- Bronze, beige, or pebble khaki (driftwood) frame color
- Bronze, dark gray, or smoke gray 10-mil vinyl color
- BetterVue® 2020, SunScreen®, 1814 or 1816 screen mesh
- Turn (swivel) clips for easy removal
- Send unit without foam tape
- Available as a trapezoid shape
- Sizing
 - Opening size with a 1/4" deduction in width & height
 - Opening size with 3/8" deduction in width & height
 - Actual unit size with no deductions





Standard Lip Frame Fixed Lite

Series LF20

Guidelines

Information necessary for a complete and correct quote/order:

	Example:	Example:	Example:
1. Product / series number	LF20	LF20	LF20
2. Size selection	Opening with 1/4"cutback	Opening with 3/8"cutback	Actual (No deductions)
3. Size	49 1/2" x 18"	84" x 62 1/2"	25" x 124"
4. Frame color	White	Beige	Pebble khaki
5. Vent glazing	Clear	Smoke gray	Bronze
6. Spreader bar quantity	1 vertical	2 vertical	3 horizontal
7. All other desired options must be included at the time of order			

Note: Options not listed cannot be incorporated into your quote or order

Additional order and product information:

- Opening measurement is preferred:** Our standard cutback (deduction) is 1/8" and will be taken in both width and height. You may choose one of our other options: 1/4", 3/8" cutback, or actual unit size (not including installation flange).
- To ensure exceptional product performance and functionality, spreader bars are required on actual unit size that exceed 42" in width or height.

3. Sizes and configurations:	Minimum Actual Size :	Maximum Actual Size :
Lip Frame with (vinyl)	2 7/8" x 2 7/8"	124" x 50 1/2" or 50 1/2" x 124"
Lip Frame with (screen)	2 7/8" x 2 7/8"	124" x 84" or 84" x 124"
Trapezoid with (vinyl)	3" x 5" w/ min leg height of 4"	124" x 50 1/2" or 50 1/2" x 124"
Trapezoid with (screen)	3" x 5" w/ min leg height of 4"	124" x 84" or 84" x 124"

Vertical Two Track

Series 2V60

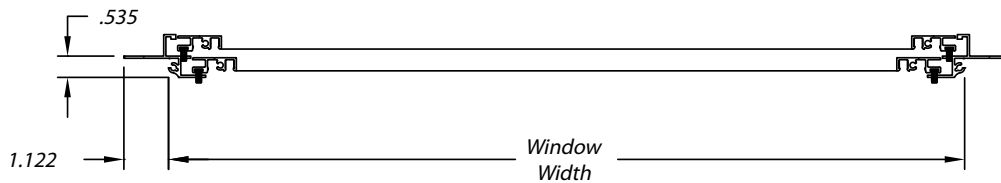
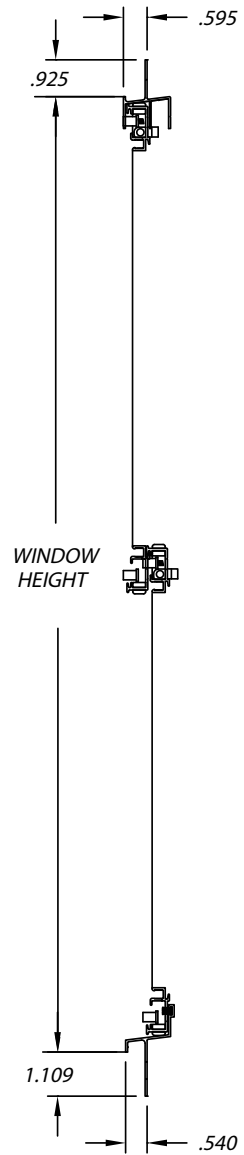
Features

STANDARD FEATURES

- Inside mount frame
- Aluminum extruded main frame
- White frame color
- Frame depth 1-1/16"
- Nominal 1" front installation flange with 9/16" setback
- Glazed with 10-mil clear vinyl
- Equal interlocking vents
- Tilt in, removable vents
- Spreader bar(s)
- Sizing
 - Opening size with 3/8" deduction in width & height

OPTIONAL FEATURES

- Bronze, beige, or pebble khaki (driftwood) frame color
- Bronze, dark gray, or smoke gray 10-mil vinyl color
- BetterVue® 2020, SunScreen®, 1814 or 1816 screen mesh
- Lip frame screen attached
- Unequal vents
- Sizing
 - Actual unit size with no deductions





Vertical Two Track

Series 2V60

Guidelines

Information necessary for a complete and correct quote/order:

1. Product / series number
 2. Vent configuration
 3. Size selection
 4. Size
 5. Spreader bar quantity
 6. Frame color
 7. Vent glazing
 8. Screen configuration
 9. All other desired options must be included at the time of order
- Note:** Options not listed cannot be incorporated into your quote or order

Example:

2V60
 Equal
 Opening with 3/8" cutback
 10.5" x 19.75"
 None
 White
 Clear
 No screen

Example:

2V60
 Unequal
 Actual (No deductions)
 42" x 75"
 1
 Beige
 Smoke gray
 Attached

Example:

2V60
 Equal
 Actual (No deductions)
 36" x 40"
 1
 Bronze
 Smoke gray
 No screen

Additional order and product information:

1. **Opening measurement is preferred:** Our standard cutback (deduction) is 3/8" and will be taken in both width and height. You may also order by actual unit size (not including installation flange).
2. To ensure exceptional product performance and functionality, spreader bars are required on actual unit widths that exceed 30" wide.

3. Sizes and configurations:

Vertical Two Track

Minimum Actual Size :

10 1/2" x 127/8"

Maximum Actual Size :

42" x 75"